



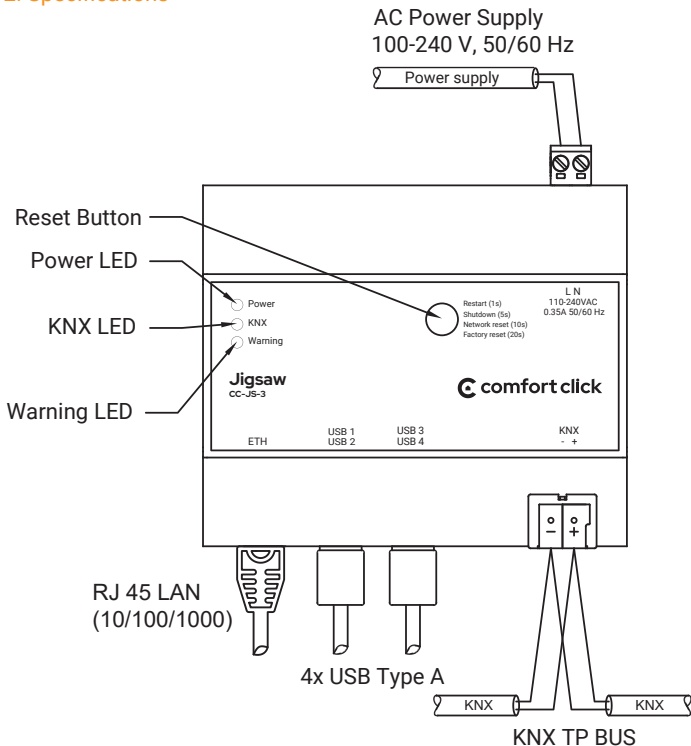
**Jigsaw**  
CC-JS-3

# Jigsaw KNX Manual

## 1. About

Jigsaw is used for controlling and monitoring home automation systems in apartments and small to average residential houses.

## 2. Specifications



## Technical specifications

Name: Jigsaw

Model: CC-JS-3

Description: Building automation server

Mounting: DIN rail, 6U

Dimensions: 107 mm x 91 mm x 62 mm

Power Supply: 100-240 V, 50/60 Hz

Power Consumption: Approx. 5 -10 W

OS: Embedded Linux

CPU: Quad-core 1,5 GHz ARM 64-bit

Memory: 2 GB

Storage: MicroSD card 32GB, Industrial

Connectors: 1x KNX, 2x USB 2.0, 2x USB 3.0,  
1x Gigabit Ethernet port

KNX: Integrated KNX IP Secure Interface

Temperature: Operation: -5°C - 45°C

Storage: Storage / transport: -25 °C – +70 °C

Protection rating: IP20

## Software specifications

Software: bOS - Building Operating System

License: bOS Pro License with 2 Users

Devices: KNX, Z-Wave, Modbus, BACnet, Alexa,  
Google Home, IP cameras, Sonos, Hue,  
IP Cameras, TCP/IP devices, DSC,  
Satel, Paradox, Kodi, Global Caché...

Logic: Program, Schedule, Time, Scene,  
Regulator, Logging, Messaging,  
Calculations, Logic Gates...

## Status LEDs

### Power (green color)

- ON: when power supply is connected.
- OFF: power supply is disconnected / power supply malfunction.

### KNX (green color)

- ON: when KNX bus is connected and Jigsaw KNX Driver is connected.
- OFF: when KNX bus is disconnected or Jigsaw KNX Driver is not connected.

### Warning (red color)

- OFF: normal operation.
- ON: problem with the server:
  - no internet connection,
  - license problem,
  - no KNX connection.

Connect to the server with bOS Configurator and check for details.

## Reset button

- **1s:** Restart
- **5s:** Shutdown
- **10s:** Network reset (IP set to DHCP)
- **20s:** Factory reset (IP set to DHCP, clear configuration, logs, users...)

3. **Installation** - mount your Jigsaw on the DIN rail, connect the power supply, KNX and connect the Jigsaw to the network.

4. **Download and install bOS Configurator** on your PC. You can get bOS Configurator on our web page:  
<https://www.comfortclick.com/BOS/Software/BOSConfig>

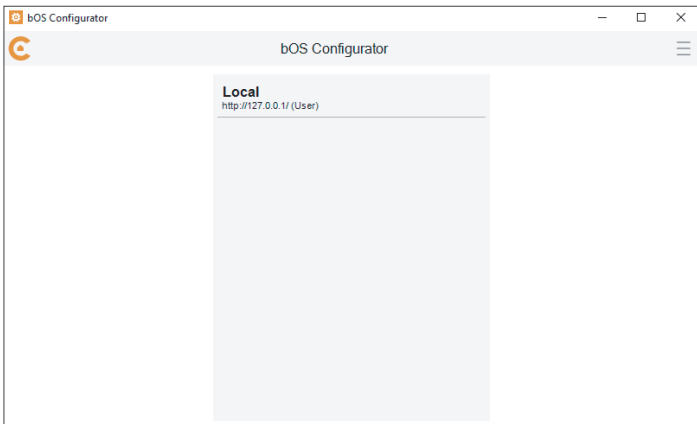
## 5. Connecting to the Jigsaw

5.1 a) **Connect locally** - make sure that your PC with bOS Configurator is connected to the same network as your Jigsaw then follow the steps below.

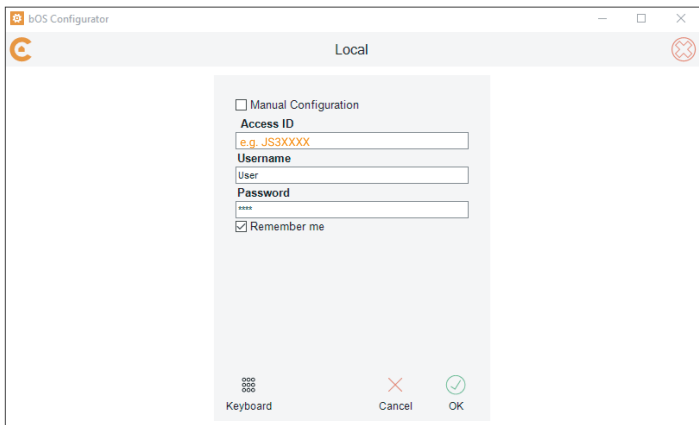
b) **Connect remotely** – if you are connecting to your Jigsaw remotely via the Internet, port forwarding should be enabled first. On your router port 443 (TCP) should be forwarded to your Jigsaw's local IP. If port forwarding is not possible, you can use ComfortClick Cloud Gateway.

## 5.2 Open bOS Configurator.

5.3 Click on the menu button on the top right corner and select **Add**.



## 5.4 Enter your **Access ID**, **User name** and **Password**



Manual Configuration

**Access ID**  
e.g. JS3XXXX

**Username**  
User

**Password**  
\*\*\*\*

Remember me

Keyboard Cancel OK

By default, **Access ID is the serial number of your Jigsaw**. You can find the serial number on the sticker on the side of your Jigsaw (e.g. JS3XXXX). Access ID is a unique name for accessing the bOS Server. This name enables adding profile and accessing your bOS Server, without the need of knowing its IP address.

Enter Username: **User** and Password: **Pass** and click OK.

6. Start creating your bOS configuration or open an existing configuration.

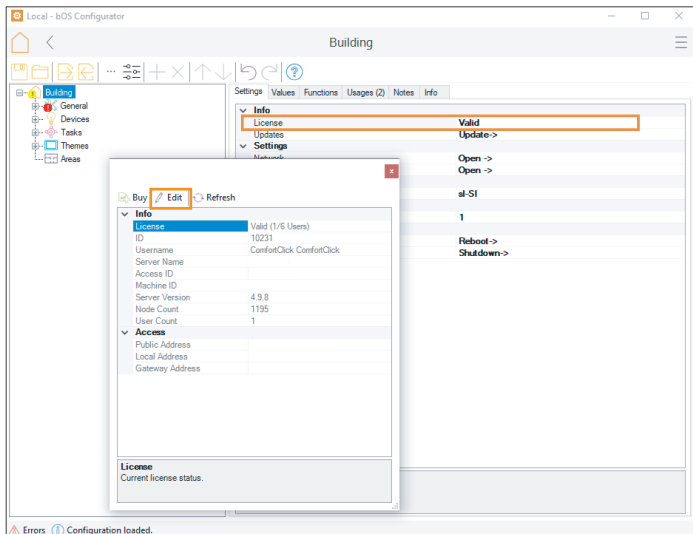
Please check our support tools for more information on how to work with bOS: [www.comfortclick.com/Support](http://www.comfortclick.com/Support)



It is recommended that you change your default **Access ID** and other access settings. See procedure below.

## Edit Jigsaw Access Settings

1. Open bOS Configurator.
2. Click **...** button under **Building - License**.
3. Click **Edit** button



4. **Login in** with your ComfortClick account.

5. You can now change your **Server name**, **Access ID**, and set the **Public IP Address**.

6. **Setting Public IP** - when setting Public IP, port (443 TCP by default) on your router should already be opened and forwarded to your Jigsaws local IP. Public IP is verified and if connection can be established (server accessible from the internet) you will be able to save it. If port forwarding is not possible, you can request activation of ComfortClick Cloud Gateway. After setting the Public IP click **Update**.

Controller Access

ID  
10231

Username  
ComfortClick ComfortClick

Server Name\*  
LukaComp

Access ID\*  
luka.comp

Controller image **Browse...** No file selected.  
Upload image to replace existing one.

Local Address  
https://192.168.128.20/

Public Address

**Set Public Address**

IP

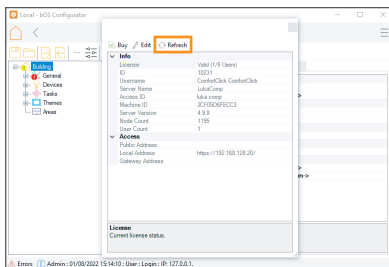
Port  
443

Dynamic IP

**Set** **Clear** **Cancel**  Skip service check




**Update** **Cancel**

7. Open bOS Configurator and click **Refresh** button. You can now connect to the Jigsaw via internet.





8. You can see the list of all your other Controllers and edit their settings under your account profile on ComfortClick web page.

| Controllers  |   |  |
|--|---|--|
| <br><b>Colibri</b><br>comfortclick.colibri.test<br>Valid (1/10 Users)<br>Online | <br><b>Demo</b><br>comfortclick.demo<br>Valid (7/15 Users)<br>Online | <br><b>Office</b><br>comfortclick.pisarna<br>Valid (1/10 Users)<br>Online |



## Miscellaneous

- It is recommended that you change the default user name and password; under Building - General - Users.
- Always shut down the Jigsaw properly by shutting it down in bOS Configurator or via Reset Button.
- Don't shut down the Jigsaw by unplugging it from the power supply.
- DHCP server should be running on the network in order to automatically obtain IP address on the Jigsaw.
- Do not expose this product to moisture, water or other liquids
- Do not attempt to examine or repair this product by yourself.
- This product is designed for indoor use only.
- The use of UPS is recommended.

## Warranty Terms and Conditions

ComfortClick d.o.o. with its office at Meskova 4, 1000 Ljubljana, Slovenia, other contact information is available at: [www.comfortclick.com](http://www.comfortclick.com) (hereinafter "the Manufacturer") guarantees that the device sold (hereinafter: "the Device") is free from material and manufacturing defects.

The Manufacturer shall be responsible for malfunctioning of the Device resulting from physical defects inherent in the Device that cause its operation to be incompatible with the specifications within the period of:

24 months from the date of purchase by the consumer,  
12 months from the date of purchase by a business customer (the consumer and business customer are further collectively referred to as "Customer").

The Manufacturer shall remove any defects revealed during the guarantee period, free of charge, by repairing or replacing (at the sole discretion of the Manufacturer) the defective components of the Device with new or regenerated components. The manufacturer reserves the right to replace the entire Device with a new or regenerated device. The Manufacturer shall not refund money paid for the device.

Before making a complaint, the Manufacturer recommends using the online support available at <http://www.comfortclick.com/Support>

In order to make a complaint, the Customer should contact the Manufacturer via the email: [support@comfortclick.com](mailto:support@comfortclick.com).

The faulty device shall be provided by the Customer with complete standard equipment and documents proving its purchase.

The cost of transporting the Device shall be covered by the Customer. For unjustified complaints, Manufacturer may charge the Customer with costs related to the case.

Defects shall be removed within 30 days from the date of delivering to the Manufacturer. The guarantee period shall be extended by the time in which the Device was kept by Manufacturer.

Manufacturer shall not accept a complaint claim when:

- the Device was misused or the manual was not observed,
- the Device was provided by the Customer incomplete, without accessories,
- it was determined that the fault was caused by other reasons than a material or manufacturing defect of the Device,
- the guarantee document is not valid or there is no proof of purchase,

The guarantee shall not cover:

- mechanical damages (cracks, fractures, cuts, abrasions, physical deformations caused by impact, falling or dropping the device or other object, improper use or not observing the operating manual);
- damages resulting from external causes, e.g.: flood, storm, fire, lightning, natural disasters, earthquakes, war, civil disturbance, force majeure, unforeseen accidents, theft, water damage, liquid leakage, battery spill, weather conditions, sunlight, sand, moisture, high or low temperature, air pollution;
- damages caused by malfunctioning software, attack of a computer virus, or by failure to update the software as recommended by the Manufacturer;
- damages resulting from: surges in the power and/or telecommunication network, improper connection to the grid in a manner inconsistent with the operating manual, or from connecting other devices not recommended by the Manufacturer;
- damages caused by operating or storing the device in extremely adverse conditions, i.e. high humidity, dust, too low (freezing) or too high ambient temperature. Detailed permissible conditions for operating the Device are

defined in the operating manual;

- damages caused by using accessories not recommended by the Manufacturer;
- damages caused by faulty electrical installation of the Customer, including the use of incorrect fuses;
- damages caused by Customer's failure to provide maintenance and servicing activities defined by Manufacturer;
- damages resulting from the use of spurious spare parts or accessories improper for given model, repairing and introducing alterations by unauthorized persons;
- defects caused by operating faulty Device or accessories.

The guarantee shall not cover natural wear and tear of the Device and its components listed in

the operating manual and in technical documentation as such elements have a defined operational life.

The Device Guarantee shall not exclude, limit or suspend the Customer's warranty rights.

The Manufacturer shall not be liable for damages to property caused by defective device. The Manufacturer shall not be liable for indirect, incidental, special, consequential or punitive damages, or for any damages, including, inter alia, loss of profits, savings, data, loss of benefits, claims by third parties and any other damages arising from or related to the use of the



Herby, ComfortClick d.o.o. declares that the device is in compliance with Directive 2014/30/EU.



Device labelled with this symbol should not be disposed with other household wastes. It shall be handed over to the applicable collection point for the recycling of waste electrical and electronic equipment.



**Building Automation Software & Servers**

**Thank you for buying ComfortClick products.  
For any additional information please visit  
[www.ComfortClick.com](http://www.ComfortClick.com).**



ComfortClick d.o.o.  
[www.comfortclick.com](http://www.comfortclick.com)  
[info@comfortclick.com](mailto:info@comfortclick.com)

